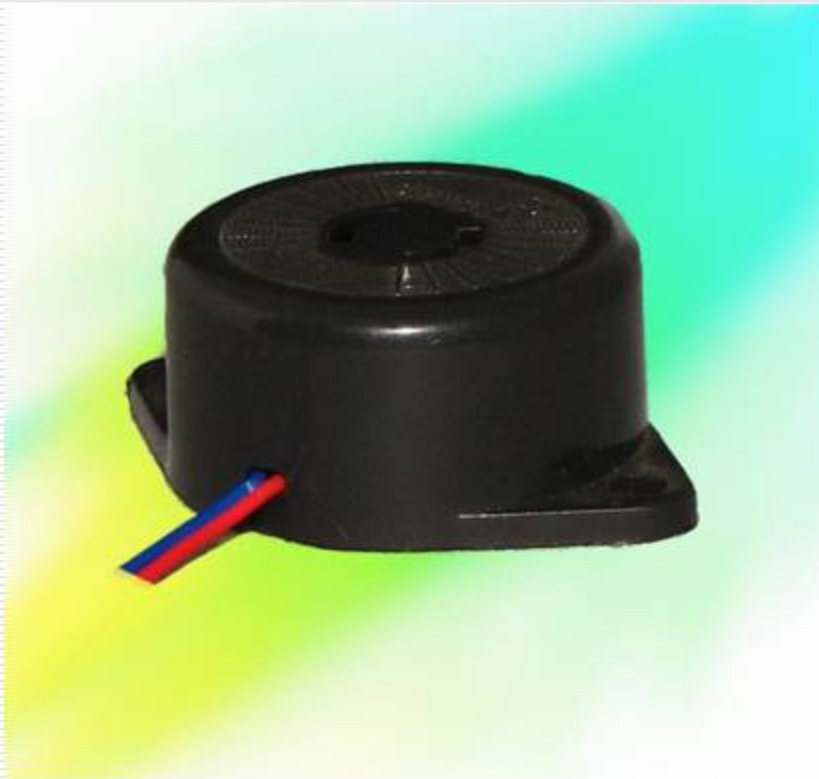


# B27A

---



## **MODEL NO.B27A**

**Sound Level Minimum:**85db

**Oscillation Frequency:**4KHz $\pm$ 500Hz

**Current Consumption:** Maximum 15mA

**Operating Voltage:**1.5 to 27 VDC

**Weight gms:**9

**Tone:** Continuous

**Mounting:** Flange type

**Wire/Lead length:**120mm min. 2 wire

**Height (mm):**16.5

**Diameter (mm):**32

**Pitch (mm):**38

**Operating temperature range:**-20 to 50°C

**Storage temperature range:**-30 to 60°C

*Electrical parameter measurements 12VDC & at 30 cm. distance or unless and otherwise specified. Tolerance for dimension  $\pm 0.1$  mm ,pin height  $\pm 1.0$ mm.*

---